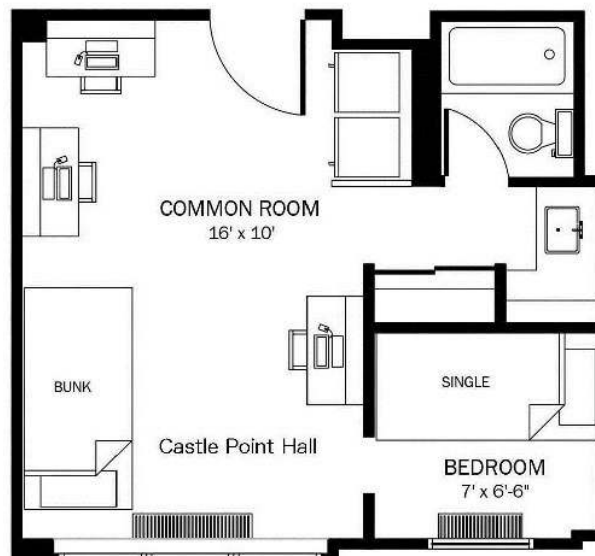


ON CAMPUS HOUSING AT THE STEVENS INSTITUTE

Participants in the CONTACT ANGLE symposium have the option us using conveniently located campus housing. Details are as follows:

- LOCATION: Castle Point Hall (apartments) at Stevens Institute building number 26 on map:
- www.mstconf.com/Stevens_3D_campus_map.pdf
- AVAILABILITY: Accommodations will be available starting July 10 - July 17
- RATES: APPROX \$110/day with a 2.75% transaction fee.
- CONTACT: All accommodations will be made through Fionnuala Coyle who can be contacted at:
 - E-mail: fcoyle@stevens.edu
 - Tel: 201-216-5401
- SAMPLE ROOM

CASTLE POINT HALL



This is a common floor plan for this building. Dimensions and layout will vary throughout the building.